

|                           |                |         |
|---------------------------|----------------|---------|
| Category                  | Created by:    | Date:   |
| Location Map              | BKM            | 8/30/16 |
| Agency                    | Project Number | County  |
| --                        | 2016-1         | Collier |
| Application/Permit Number | SEC/TWP/RNG    |         |
| --                        | 34/48S/26E     |         |

## Vanderbilt Reserve

### Location Map

11000 Metro Pkwy  
Suite 4  
Fort Myers, FL 33966  
Phone: (239)418-0671  
Fax: (239)418-0672  
www.boylanenv.com





**NOTES:**

Aerial photographs were acquired through Collier County Property Appraiser's office with a flight date of January, 2015.

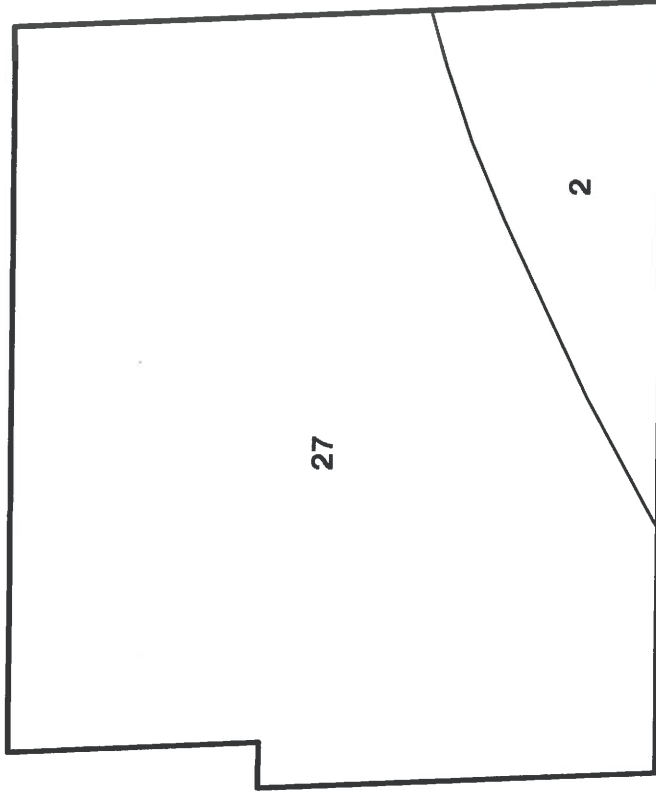
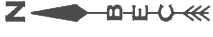


Scale:  
 1" = 800'  
 County  
 Collier  
 S/T/R  
 34/48S/26E

11000 Metro Parkway  
 Suite 4  
 Ft. Myers, FL 33966  
 Phone: (239) 418-0671  
 Fax: (239) 418-0672  
 www.boylanenv.com

**Vanderbilt Reserve  
 (fka Falls of Portofino Ph 2)  
 2015 Aerial With Boundary**

|                           |            |
|---------------------------|------------|
| Category                  | Date:      |
| Aerial                    | BKM 9/9/16 |
| Agency                    | BEC Number |
| SFWMD                     | 2016-1     |
| Application/Permit Number | Revision   |
| 11-02332-P/AP. 140820-6   |            |



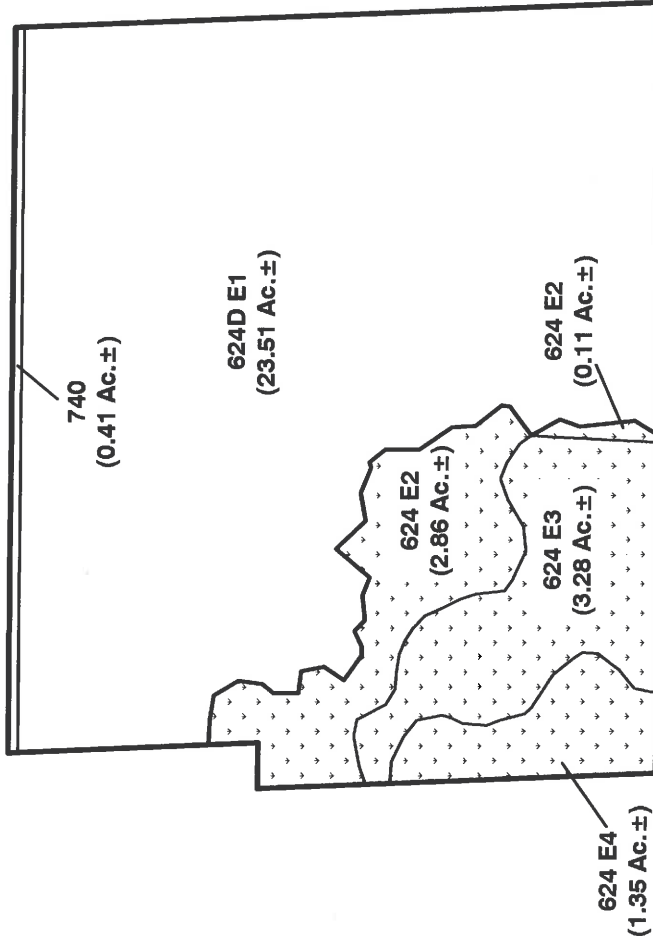
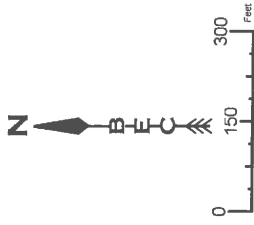
| NRCS Soils Legend |   |        |
|-------------------|---|--------|
| Soil No           | Description                             | Hydric |
| 2                 | Holopaw Fine Sand; Limestone Substratum | Y      |
| 27                | Holopaw Fine Sand                       | Y      |

**NOTES:**

Soils were acquired from the FGDL and are from the NRCS Soils Maps.

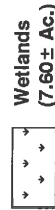


|   |                         |   |            |          |        |
|---|-------------------------|---|------------|----------|--------|
| Category  | Soils                   | Drawn By:   | BKM        | Date:    | 9/9/16 |
| Agency  | SFWMD                   | BEC Number  | 2016-1     | Revision |        |
| Application/Permit Number   | 11-02332-P/AP. 140820-6 | Scale:  | 1" = 300'  |          |        |
|   |                         | County  | Collier    |          |        |
|   |                         | S/T/R   | 34/48S/26E |          |        |
| <p><b>Vanderbilt Reserve</b><br/>(fka Falls of Portofino Ph 2)<br/>NRCS Soils Map</p> |                         | <p>11000 Metro Parkway<br/>Suite 4,<br/>Ft. Myers, FL 33966<br/>Phone: (239) 418-0671<br/>Fax: (239) 418-0672<br/>www.boylanenv.com</p> |            |          |        |



| FLUCFCS Legend |  |                   |             |
|----------------|--|-------------------|-------------|
| FLUCFCS Code   | Community  | Total             | %           |
| 624 E2         | Cypress-Pine-Cabbage Palm (25-49% Exotics)         | 2.97 ± Ac         | 9.42%       |
| 624 E3         | Cypress-Pine-Cabbage Palm (50-74% Exotics)         | 3.28 ± Ac         | 10.41%      |
| 624 E4         | Cypress-Pine-Cabbage Palm (75-99% Exotics)         | 1.35 ± Ac         | 4.28%       |
| 624 D E1       | Cypress/Pine/Cabbage Palm, Drained (1-24% Exotics) | 23.51 ± Ac        | 74.59%      |
| 740            | Disturbed Land                                     | 0.41 ± Ac         | 1.30%       |
| <b>Total</b>   |  | <b>31.52 ± Ac</b> | <b>100%</b> |

**LEGEND**



**NOTES:**  
 FLUCFCS lines estimated from 1"=200' aerial photographs and locations approximated.  
 FLUCFCS per Florida Land Use, Cover and Forms Classification System (FLUCFCS) (FDOT 1999).



Scale: 1" = 300'  
 County: Collier  
 S/T/R: 34/48S/26E

11000 Metro Parkway  
 Suite 4,  
 Ft. Myers, FL 33966  
 Phone: (239) 418-0671  
 Fax: (239) 418-0672  
 www.boylanenv.com

**Vanderbilt Reserve**  
 (fka Falls of Portofino Ph 2)  
 FLUCFCS Map

Drawn By: BKM  
 Date: 9/9/16  
 BEC Number: 2016-1  
 Revision: 1

Category: FLUCFCS  
 Agency: SFWMD  
 Application/Permit Number: 11-02332-P/AP. 140820-6



**NOTES:**  
 FLUCFCS lines estimated from 1"=200' aerial photographs and locations approximated.  
 FLUCFCS per Florida Land Use, Cover and Forms Classification System (FLUCFCS) (FDOT 1999)  
 Aerial photographs were acquired through Collier County Property Appraiser's office with a flight date of January, 2016.



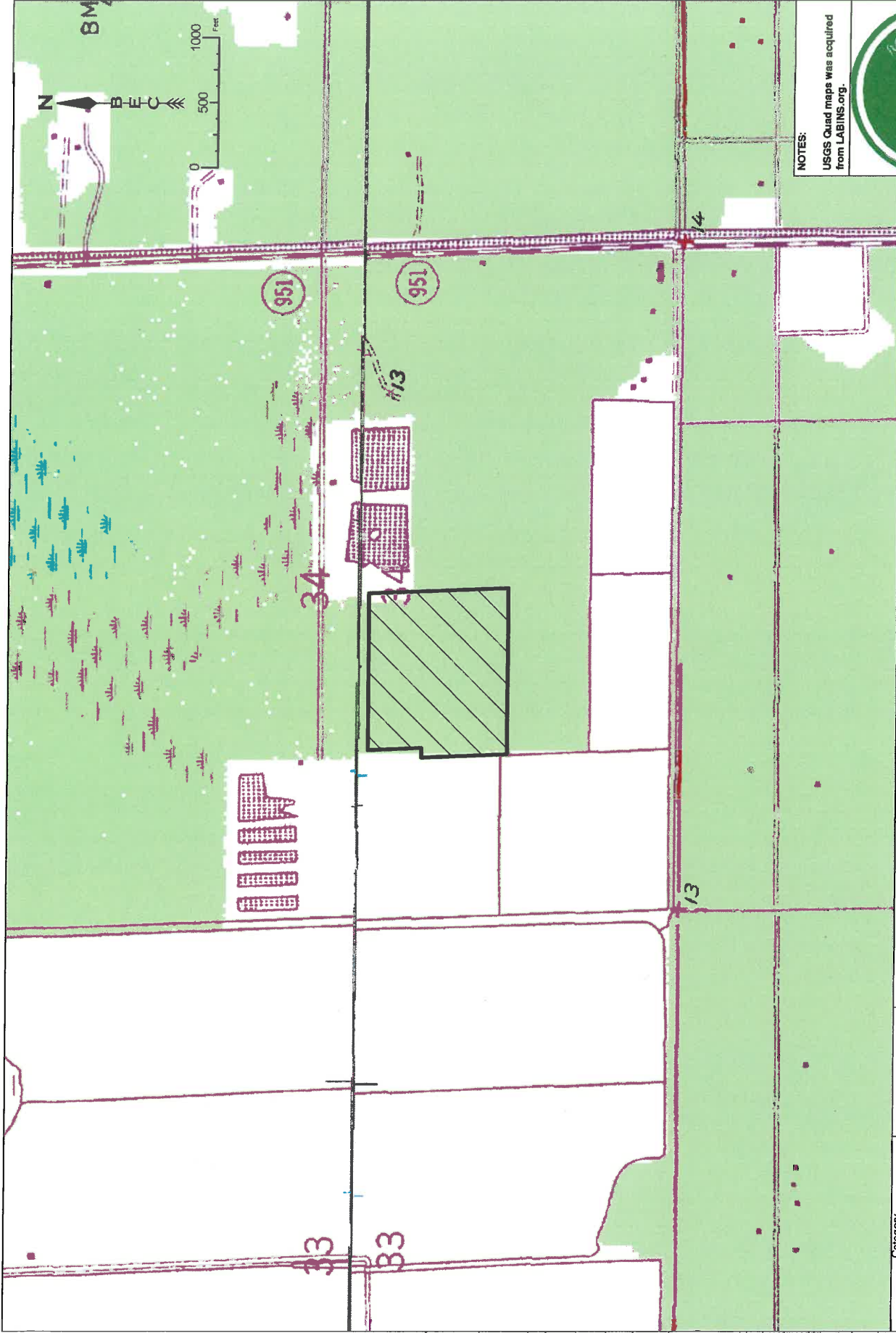
11000 Metro Parkway  
 Suite 4,  
 Ft. Myers, FL 33966  
 Phone: (239) 418-0671  
 Fax: (239) 418-0672  
 www.boylianenv.com

| FLUCFCS Legend |  |                        |
|----------------|--|------------------------|
| FLUCFCS Code   | Community  | %                      |
| 624 E2         | Cypress-Pine-Cabbage Palm (25-49% Exotics)         | 2.87 ± Ac 9.42%        |
| 624 E3         | Cypress-Pine-Cabbage Palm (50-74% Exotics)         | 3.28 ± Ac 10.41%       |
| 624 E4         | Cypress-Pine-Cabbage Palm (75-99% Exotics)         | 1.35 ± Ac 4.28%        |
| 624 D E1       | Cypress/Pine/Cabbage Palm, Drained (1-24% Exotics) | 23.51 ± Ac 74.59%      |
| 740            | Disturbed Land                                     | 0.41 ± Ac 1.30%        |
| <b>Total</b>   |  | <b>31.52 ± Ac 100%</b> |

Scale: 1" = 300'  
 County Collier  
 S/T/R 34/48S/26E

**Vanderbilt Reserve**  
 (fka Falls of Portofino Ph 2)  
 Aerial FLUCFCS Map

|                           |                |                       |
|---------------------------|----------------|-----------------------|
| <b>LEGEND</b>             | Category       | Wetlands (7.60 ± Ac.) |
| FLUCFCS                   | Agency         | SFWMD                 |
| Application/Permit Number | 11-02332-P/AP. | 140820-6              |
| Drawn By:                 | BKM            | Date: 9/9/16          |
| BEC Number                | 2016-1         | Revision              |



NOTES:  
USGS Quad maps was acquired from LABINS.org.

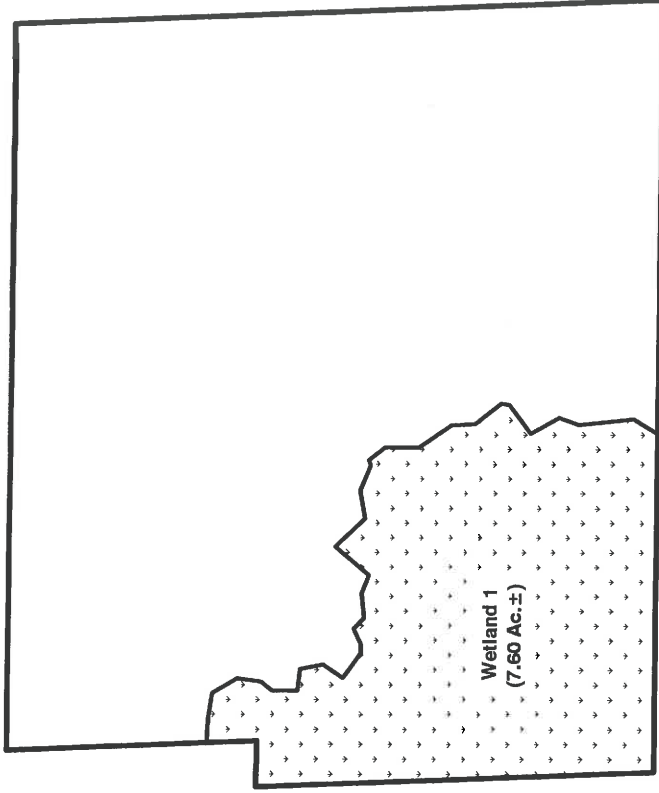


11000 Metro Parkway  
Suite 4,  
Ft. Myers, FL 33966  
Phone: (239) 418-0671  
Fax: (239) 418-0672  
www.boylanenv.com

Scale:  
1" = 1000'  
County  
Collier  
S/T/R  
34/48S/26E

**Vanderbilt Reserve**  
(fka Falls of Portofino Ph 2)  
USGS Quad Map

|                           |            |          |
|---------------------------|------------|----------|
| Category                  | Drawn By:  | Date:    |
| Quad                      | BKM        | 9/9/16   |
| Agency                    | BEC Number | 2016-1   |
| SFWMD                     | Revision   |          |
| Application/Permit Number |            |          |
| 11-02332-P/AP             |            | 140820-6 |



| Wetland/OSW |            |
|-------------|------------|
| Wetland     | Acres      |
| 1           | 7.60± A.c. |
|             | 7.60± A.c. |

**LEGEND**

Wetlands  
(7.60± Ac.)

|                           |                         |
|---------------------------|-------------------------|
| Category                  |                         |
| Wet Id                    |                         |
| Agency                    | SFWMD                   |
| Application/Permit Number | 11-02332-P/AP. 140820-6 |

|           |     |            |        |
|-----------|-----|------------|--------|
| Drawn By: | BKM | Date:      | 9/9/16 |
|           |     | BEC Number | 2016-1 |
|           |     | Revision   |        |

**Vanderbilt Reserve  
(fka Falls of Portofino Ph 2)  
Wetland ID Map**

|        |            |
|--------|------------|
| Scale: | 1" = 300'  |
| County | Collier    |
| S/T/R  | 34/48S/26E |

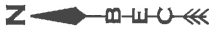
11000 Metro Parkway  
Suite 4,  
Ft. Myers, FL 33966  
Phone: (239) 418-0671  
Fax: (239) 418-0672  
www.boylanenv.com



**NOTES:**  
FLUCFCS lines estimated from 1"=200' aerial photographs and locations approximated.  
FLUCFCS per Florida Land Use, Cover and Forms Classification System (FLUCFCS), (FDOT 1999)

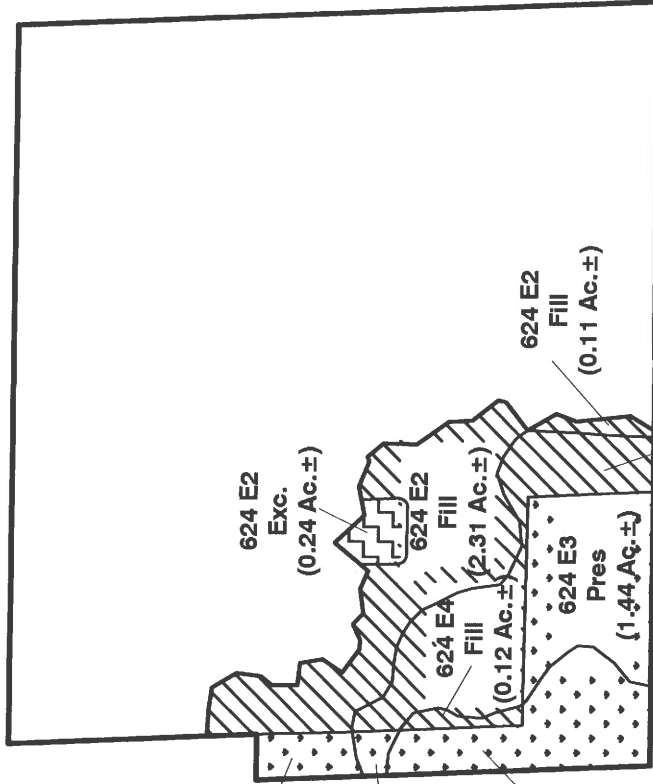






## Impact by FLUCFCS

| FLUCFCS Code | Community                                  | Wetland          |                  | Total            |
|--------------|--|------------------|------------------|------------------|
|              |  | Preserve         | Excavate         |                  |
| 624 E2       | Cypress-Pine-Cabbage Palm (25-49% Exotics) | 0.31 ± Ac        | 0.24 ± Ac        | 2.97 ± Ac        |
| 624 E3       | Cypress-Pine-Cabbage Palm (50-74% Exotics) | 1.54 ± Ac        | -                | 3.28 ± Ac        |
| 624 E4       | Cypress-Pine-Cabbage Palm (75-99% Exotics) | 1.23 ± Ac        | -                | 1.35 ± Ac        |
| <b>Total</b> |  | <b>3.08 ± Ac</b> | <b>0.24 ± Ac</b> | <b>7.60 ± Ac</b> |



**Legend**

- Wetland Preserve (3.08 ± Ac.)
- Wetland Fill (4.28 ± Ac.) (13,810 CY)
- Wetland Excavate (0.24 ± Ac.) (2,323 CY)

**NOTES:**

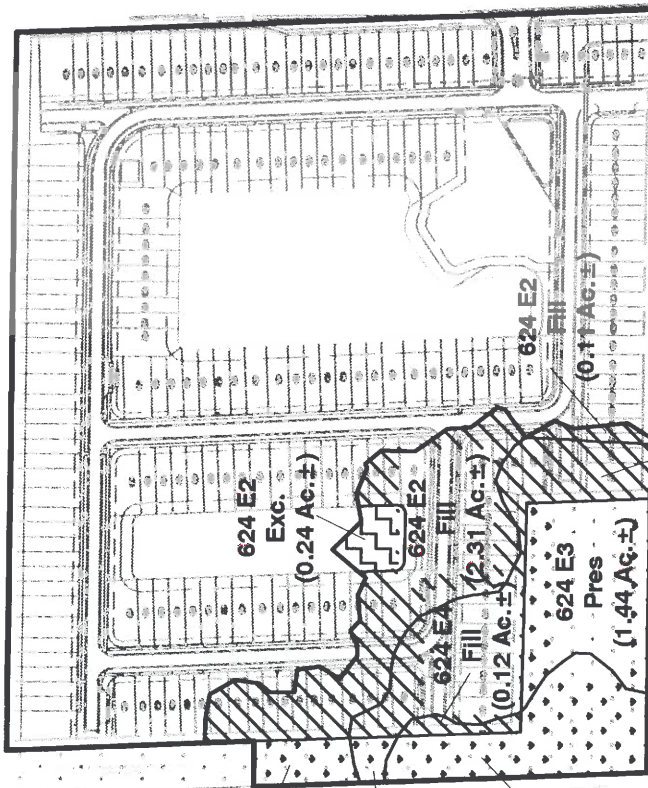
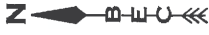
FLUCFCS lines estimated from 1"=200' aerial photographs and locations approximated.

FLUCFCS per Florida Land Use, Cover and Forms Classification System (FLUCFCS) (FDOT 1999).

Siteplan was acquired from ABB, Inc on 9/9/16 Drawing email: VR-Site\_2016\_09-09-BoylanEnv.



|  |               |            |  |          |          |
|--|---------------|------------|--|----------|----------|
| Category   | Impact        | Drawn By:  | BKM  | Date:    | 9/9/16   |
| Agency   | SFWMD         | BEC Number | 2016-1   | Revision |          |
| Application/Permit Number                                  | 11-02332-P/AP |            |  |          | 140820-6 |
| <b>Vanderbilt Reserve</b><br>(fka Falls of Portofino Ph 2) |               | Scale:     | 1" = 300'  |          |          |
| Impact By FLUCFCS Map                                      |               | County     | Collier  |          |          |
|  |               | ST/R       | 34/48S/26E   |          |          |
|  |               | Address    | 11000 Metro Parkway<br>Suite 4,<br>Ft. Myers, FL 33966 |          |          |
|  |               | Phone:     | (239) 418-0671   |          |          |
|  |               | Fax:       | (239) 418-0672   |          |          |
|  |               | Website:   | www.boylanenv.com                                      |          |          |



**Legend**



Wetland Preserve  
(3.08± Ac.)



Wetland Fill  
(4.28± Ac.) (13,810 CY)



Wetland Excavate  
(0.24± Ac.) (2,323 CY)

**Impact by FLUCFCS**

| FLUCFCS Code | Community                                  | Wetland Preserve | Wetland Fill     | Wetland Excavate | Total            |
|--------------|--|------------------|------------------|------------------|------------------|
| 624 E2       | Cypress-Pine-Cabbage Palm (25-49% Exotics) | 0.31 ± Ac        | 2.42 ± Ac        | 0.24 ± Ac        | <b>2.97 ± Ac</b> |
| 624 E3       | Cypress-Pine-Cabbage Palm (50-74% Exotics) | 1.54 ± Ac        | 1.74 ± Ac        | -                | <b>3.28 ± Ac</b> |
| 624 E4       | Cypress-Pine-Cabbage Palm (75-99% Exotics) | 1.23 ± Ac        | 0.12 ± Ac        | -                | <b>1.35 ± Ac</b> |
| <b>Total</b> |  | <b>3.08 ± Ac</b> | <b>4.28 ± Ac</b> | <b>0.24 ± Ac</b> | <b>7.60 ± Ac</b> |

**NOTES:**

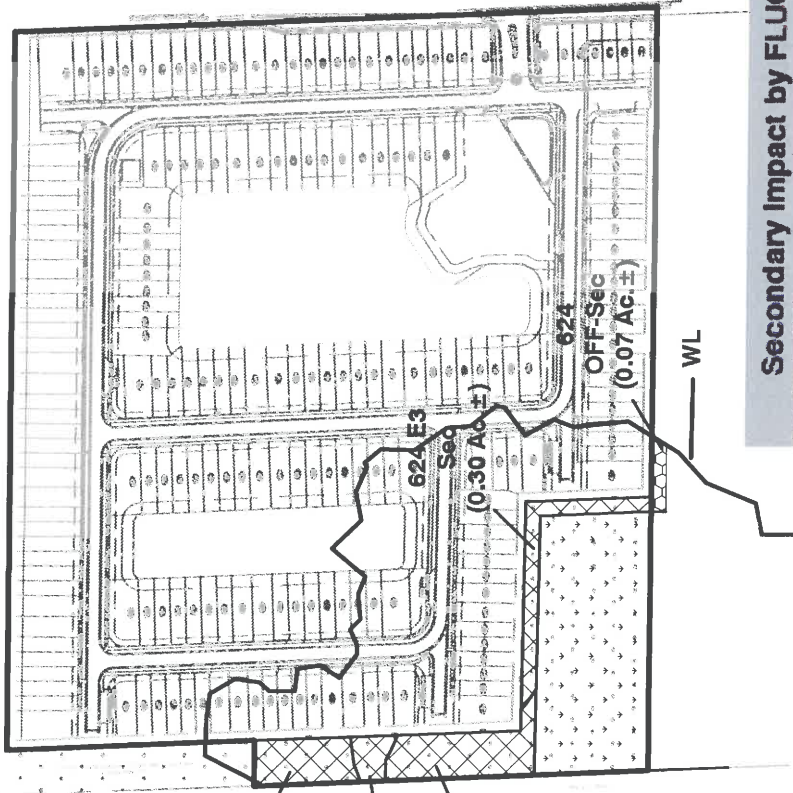
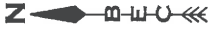
FLUCFCS lines estimated from 1"=200' aerial photographs and locations approximated.

FLUCFCS per Florida Land Use, Cover and Forms Classification System (FLUCFCS) (FDOT 1989).


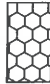

Siteplan was acquired from ABB, Inc on 8/9/16 Drawing email VR-Site\_2016\_09-09-BoylanEnv.



|  |            |                           |   |            |         |
|--|------------|---------------------------|---|------------|---------|
| Category   | Impact     | Drawn By:                 | BKM   | Date:      | 9/9/16  |
| Agency   | SFWMD      | Application/Permit Number | 11-02332-P/AP. 140820-6   | BEC Number | 2016-1  |
| Revision   | 34/48S/26E | Scale:                    | 1" = 300'   | County     | Collier |
| <p><b>Vanderbilt Reserve</b><br/>(fka Falls of Portofino Ph 2)<br/>Impact By FLUCFCS Map</p> |            |                           | <p>11000 Metro Parkway<br/>Suite 4,<br/>Ft. Myers, FL 33966<br/>Phone: (239) 418-0671<br/>Fax: (239) 418-0672<br/>www.boylanenv.com</p> |            |         |



**Legend**

-  Onsite Secondary Impacts (1.17 ± Ac.)
-  Offsite Secondary Impacts (0.07 ± Ac.)
-  Wetlands Preserve

| FLUCFCS Code | Community                                    | Impact           |
|--------------|--|------------------|
| 624 E2       | Cypress-Pine-Cabbage Palm (25-49% Exotics)   | 0.31 ± Ac        |
| 624 E3       | Cypress-Pine-Cabbage Palm (50-74% Exotics)   | 0.40 ± Ac        |
| 624 E4       | Cypress-Pine-Cabbage Palm (75-99% Exotics)   | 0.46 ± Ac        |
| 624          | Cypress-Pine-Cabbage Palm (Offsite Preserve) | 0.07 ± Ac        |
| <b>Total</b> |  | <b>1.24 ± Ac</b> |

**NOTES:**

FLUCFCS lines estimated from 1"=200' aerial photographs and locations approximated.

FLUCFCS per Florida Land Use, Cover and Forms Classification System (FLUCFCS) (FDOT 1989).

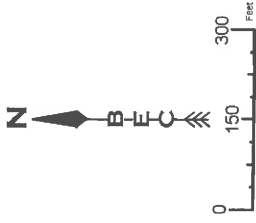
Siteplan was acquired from ABB, Inc on 9/9/16 Drawing email: \_VR\_Site\_2016\_09-09-BoylanEnv.



|                           |                |            |          |          |        |
|---------------------------|----------------|------------|----------|----------|--------|
| Category                  | Impact         | Drawn By:  | BKM      | Date:    | 9/9/16 |
| Agency                    | SFWMD          | BEC Number | 2016-1   | Revision |        |
| Application/Permit Number | 11-02332-P/AP. |            | 140820-6 |          |        |

|  |  |        |            |
|--|--|--------|------------|
| <b>Vanderbilt Reserve</b><br>(fka Falls of Portofino Ph 2)<br><b>Secondary Impact By FLUCFCS Map</b> |  | Scale: | 1" = 300'  |
|  |  | County | Collier    |
|  |  | S/T/R  | 34/48S/26E |

11000 Metro Parkway  
 Suite 4,  
 Ft. Myers, FL 33966  
 Phone: (239) 418-0671  
 Fax: (239) 418-0672  
 www.boylanenv.com



**LEGEND**  
 **Wetlands Preserve**  
 (3.08 ± Ac.)

| Preserve by FLUCFCS          |                           |                  |
|------------------------------|---------------------------|------------------|
| Target/Proposed FLUCFCS Code | Community                 | Wetland Preserve |
| 624                          | Cypress-Pine-Cabbage Palm | 3.08 ± Ac        |
| <b>Total</b>                 |                           | <b>3.08 ± Ac</b> |

**NOTES:**  
 FLUCFCS lines estimated from 1"=200' aerial photographs and locations approximated.  
 FLUCFCS per Florida Land Use, Cover and Forms Classification System (FLUCFCS) (FDOT 1899)  
 Siteplan was acquired from ABB, Inc on 9/9/16 Drawing email: \_VP-Site\_2016\_09-09-BoylanEnv.

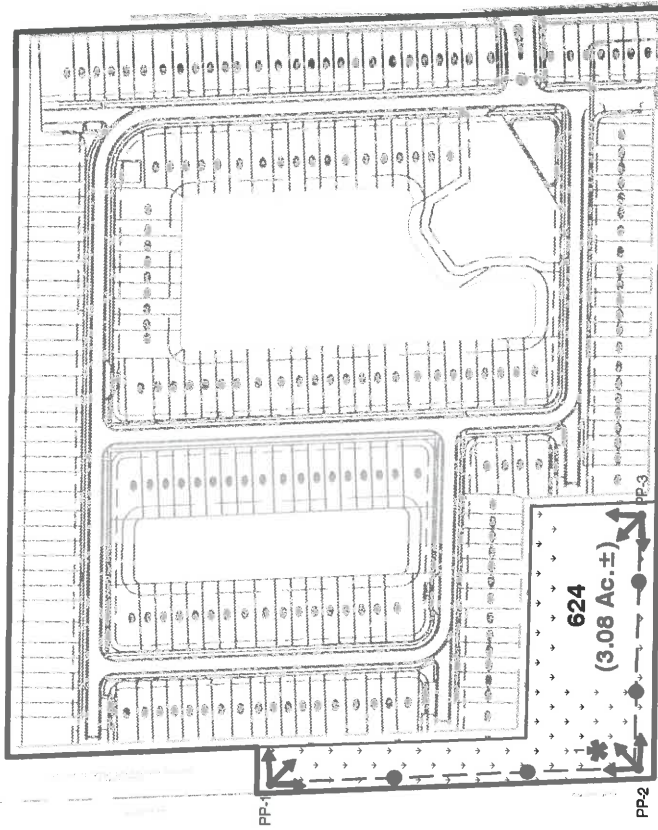
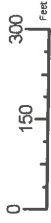


Scale:  
 1" = 300'  
 County  
 Collier  
 S/T/R  
 34/48S/26E

11000 Metro Parkway  
 Suite 4,  
 Ft. Myers, FL 33966  
 Phone: (239) 418-0671  
 Fax: (239) 418-0672  
 www.boylanenv.com

**Vanderbilt Reserve**  
 (fka Falls of Portofino Ph 2)  
 Preserve Map

|                           |                         |        |
|---------------------------|-------------------------|--------|
| Category                  | Drawn By:               | Date:  |
| Preserve                  | BKM                     | 9/9/16 |
| Agency                    | BEC Number              | 2016-1 |
| SFWMD                     | Revision                |        |
| Application/Permit Number | 11-02332-P/AP. 140820-6 |        |



**LEGEND**

- Wetlands Preserve (3.08 ± Ac.)
- Monitoring Well(1)
- Photo Station(3)
- Transect

**Preserve by FLUCFCS**

| Target/Proposed FLUCFCS Code | Community                 | Wetland Preserve |
|------------------------------|---------------------------|------------------|
| 624                          | Cypress-Pine-Cabbage Palm | 3.08 ± Ac        |
| <b>Total</b>                 |                           | <b>3.08 ± Ac</b> |

**NOTES:**

FLUCFCS lines estimated from 1"=200' aerial photographs and locations approximated.

FLUCFCS per Florida Land Use, Cover and Forms Classification System (FLUCFCS) (FDOT 1999)

Siteplan was acquired from ABB, Inc on 9/9/16 Drawing email: \_VR-Site\_2016\_09-09-BoylanEnv.



Scale: 1" = 300'  
 County: Collier  
 S/T/R: 34/48S/26E

**Vanderbilt Reserve**  
 (fka Falls of Portofino Ph 2)  
 Monitoring Map

|   |                    |              |
|---|--------------------|--------------|
| Category: Monitoring                              | Drawn By: BKM      | Date: 9/9/16 |
| Agency: SFVMD                                     | BEC Number: 2016-1 | Revision: 1  |
| Application/Permit Number: 11-02332-P/AP_140820-6 |                    |              |